

CASEMASTER JR INSTRUCTIONS

CASEMASTER JR INSTRUCTIONS

The Casemaster Jr. should be bolted to a good table or stand (work bench). A lot of pressure is required to size some cases that have been fired in worn or oversized chambers such as machine guns. The front of the press should hang over the edge of the bench so the cases fall through the die into a box,

This machine will arrive set-up for the caliber that you have requested (example 9mm).

To change the handle (JR020) position to be more efficient and work better for you – remove gear shaft retainer collar. Pull gear shaft out to the right and relocate the handle to fit your needs.

Place empty cases in the drop tube base down. A three-foot plastic fill tube (JR181) may be filled and placed in the tubing adapter (JR230) for faster operation.

Using the actuator knob (JR100) pull the transfer bar (JR060) all the way to the left. When the right hand stop screw (JR080) hits the transfer bar guide (JR180) the case will be directly under the drop tube (JR220). Then push the transfer bar all the way to the right and the case will be directly under the punch and over the sizing die. Using the shovel handle (JR020) push the case all the way through the die (JR260). It will be ready for your loader. Repeat this motion as fast as you like.

CHANGING CALIBERS

Changing from one caliber to another is quick and easy. The dies are threaded for quick changing. A transfer bar bushing (JR150) and drop tube (JR220) and changed to go from one case to another.

CALIBER	DROP TUBE	BUSHING	TUBE SLOT SIZE
380 AUTO	380	#2	.200
9MM	9MM	#2	.270
10MM & 40 S&W	10MM & 40 S&W	#2	.500
45ACP	45ACP	½" DIA	.420
30 CARBINE	30 CARBINE	#2	.810

A drop tube for each caliber is required to avoid getting cases mixed up. If you are sizing 380 range brass we recommend using the Makarov tubing separator adapter to prevent the Makarov case from sticking in the 380 die.

CASEMASTER JR INSTRUCTIONS

THE 45 ACP DIE WILL REMOVE THE BULGE AT THE BASE OF THE CASE IN THE FOLLOWING CALIBERS.

45 ACP DIE SIZE IS .467 - .468 DIA.

A .450 – .455 DIA.FLAT PUNCH SHOULD BE USED.

FEED NOSE DOWN ONE CASE AT A TIME.

7MM-08	REMINGTON
35	WHELEN
300	SAVAGE
280	REMINGTON
270	WINCHESTER
257	ROBERTS
25-06	REMINGTON
243	WINCHESTER
8MM	MAUSER
6MM	REMINGTON
30.6	SPRINGFIELD
308	WINCHESTER
358	WINCHESTER
7MM``	MAUSER
260	REMINGTON
6.5.6	A-SQUARE

THE 380 DIE WILL REMOVE THE BULGE AT THE BASE OF THE CASE IN THE FOLLOWING CALIBERS.

THE 380 DIE SIZE IS .369 DIA. + .0005 –0

A .350 - .355 DIA. FLAT PUNCH SHOULD BE USED

FEED NOSE DOWN ONE AT A TIME..

221	REMINGTON FIRE BALL
222	REMINGTON
222	REMINGTON MAGNUM
223	REMINGTON

THE BULGE CAN BE REMOVED FROM THE BASE OF THE CASES OF THE FOLLOWING CALIBERS USING SIZING DIES AS NOTED WITH THE STANDARD CASE MASTER PUNCH. FEED CASES BASE DOWN WITH FEEDER..

45ACP	.468 DIA + .0005 -0
09MM	.384 DIA + .000 -001
380 AUTO	.369 DIA + .0005 –0
10MM	.419 DIA + .0005 –0

OTHER CONVERSIONS AVAILABLE ON REQUEST.

CASEMASTER JR INSTRUCTIONS

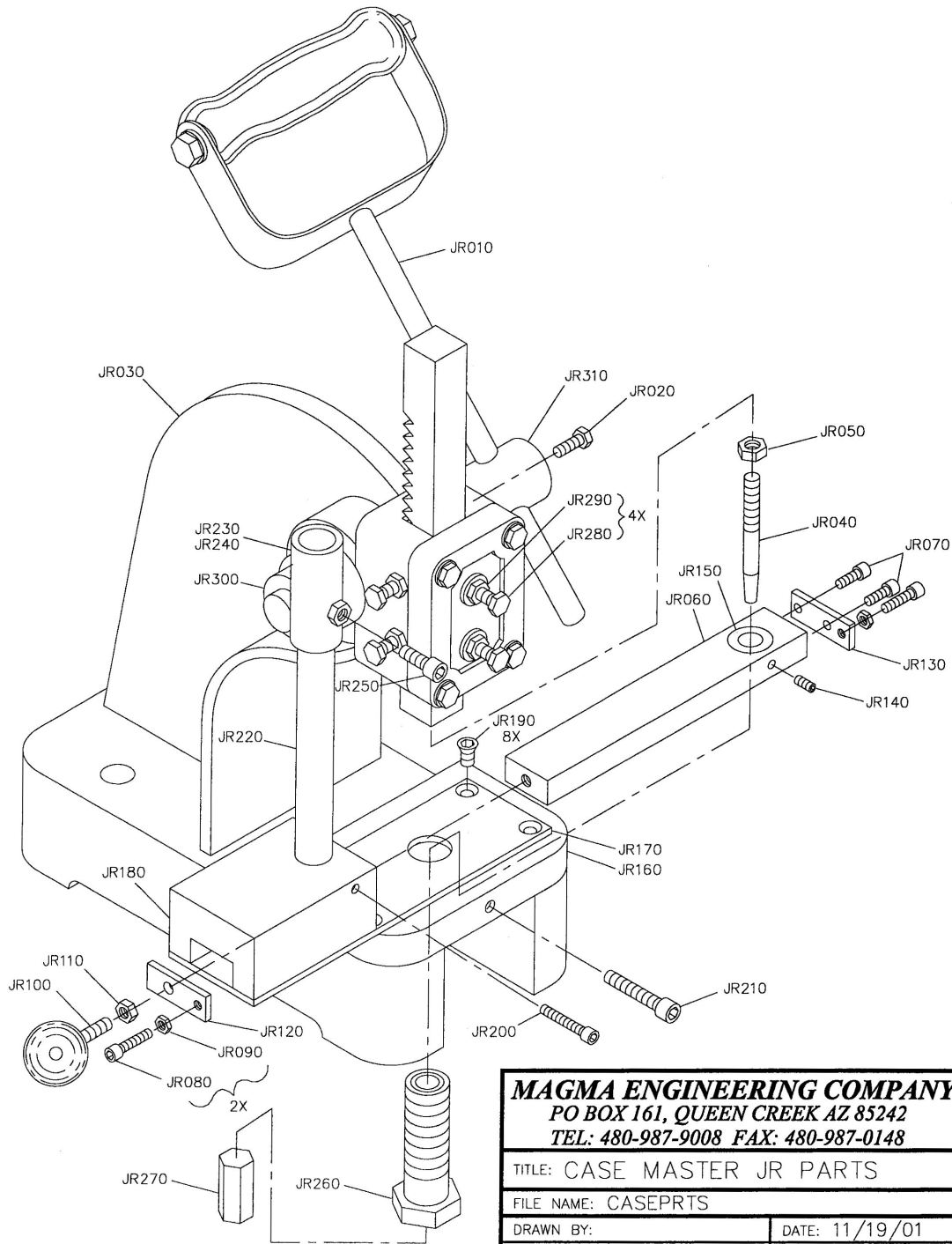
Page intentionally left blank

CASEMASTER JR INSTRUCTIONS

JR001	CASEMASTER JUNIOR
JR010	SWIVEL HANDLE..
JR020	HANDLE CLAMP SCREW 5/16-18X3/4..
JR040	CASE PUNCH
JR050	CASE PUNCH NUT
JR060	TRANSFER BAR
JR070	10-32X3/8" SHCS
JR090	10-32 HEX NUT
JR100	ACTUATOR KNOB
JR110	ACTUATOR KNOB LOCK NUT 1/4"-20
JR120	STOP PLATE (BACK)
JR130	STOP PLATE (FRONT)
JR140	10-32X3/16" SSS
JR150	TRANSFER BAR BUSHING (ALL CALIBERS)
JR160	DIE PLATE
JR170	BASE PLATE
JR180	TRANSFER BAR GUIDE
JR181	3 FT PLASTIC FILL TUBE
JR190	10-32X3/8" FHCS....
JR200	10-32X3/4" SHCS
JR210	1/4-20X1 1/4" SHCS
JR220	DROP TUBE (ANY CALIBER)
JR230	TUBING ADAPTER
JR240	MAKAROV SEPARATOR
JR250	1/4-20X1/2"SHCS
JR260	SIZING DIE (ANY CALIBER)
JR270	SIZING DIE TOOL
JR280	8MMX1" HHCS
JR290	8MM JAM NUT
JR300	RETAINER COLLAR NOT AVAILABLE
JR310	GEAR SHAFT NOT AVAILABLE

CASEMASTER JR INSTRUCTIONS

Case Master Jr. Parts Drawing



MAGMA ENGINEERING COMPANY	
PO BOX 161, QUEEN CREEK AZ 85242	
TEL: 480-987-9008 FAX: 480-987-0148	
TITLE: CASE MASTER JR PARTS	
FILE NAME: CASEPRTS	
DRAWN BY:	DATE: 11/19/01
REVISED:	SHEET: 1 OF 1